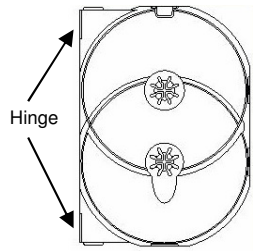
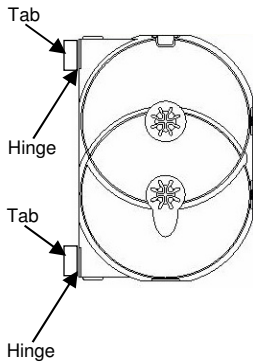


# Constructing the Megapack

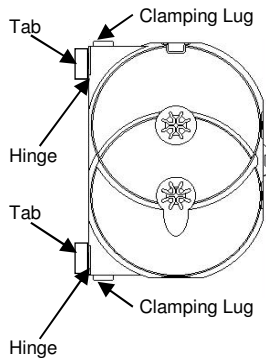
**Tray types**



**Base Tray**  
Installed first

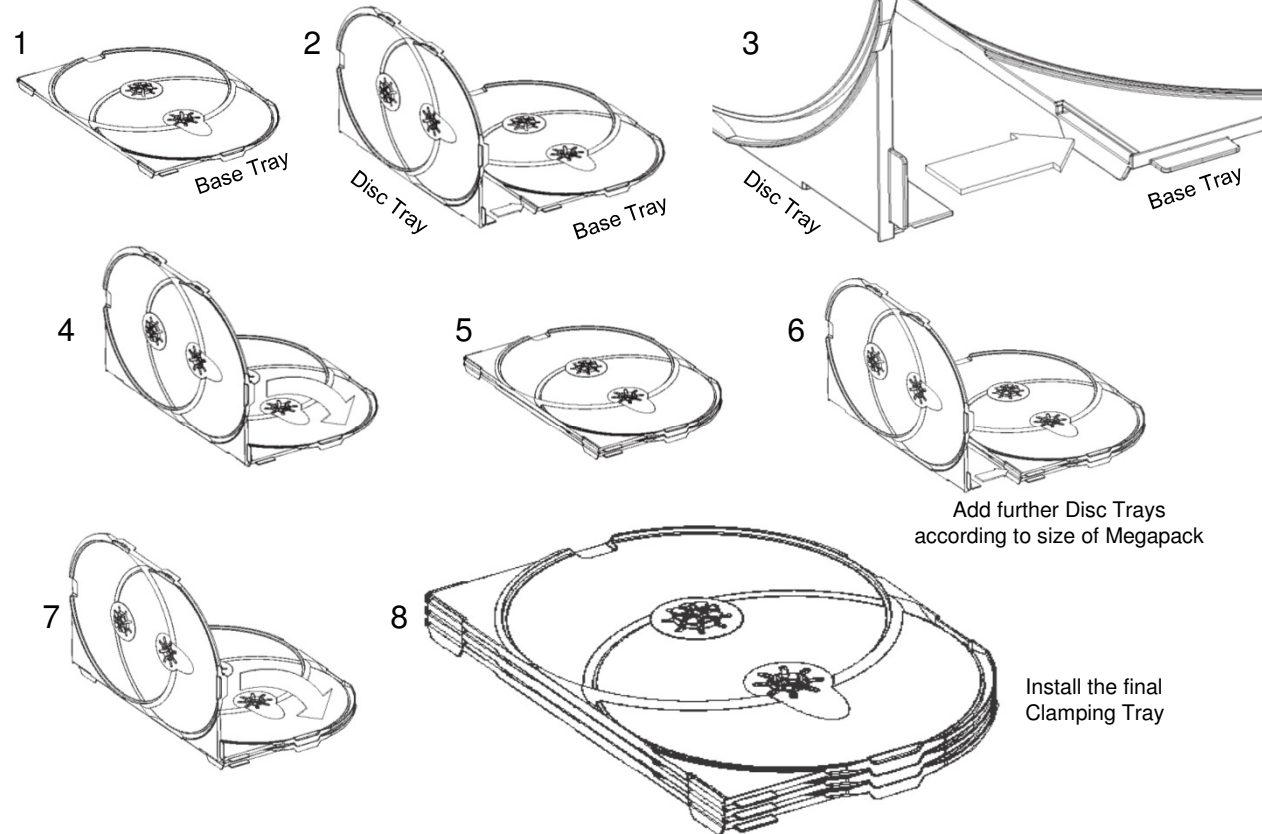


**Disc Tray**  
Installed second



**Clamping Tray**  
Installed last

## Step by step



18 to 24 Discs	12 to 18 Discs	6 to 12 Discs
Case contains 9 trays	Case contains 6 trays:	Case contains 3 trays
1 Base, 7 Two Disc & 1 Clamping	1 Base, 4 Two Disc & 1 Clamping	1 Base, 1 Two Disc & 1 Clamping



AMARAY

# De-Constructing the Megapack

## Separating the trays

